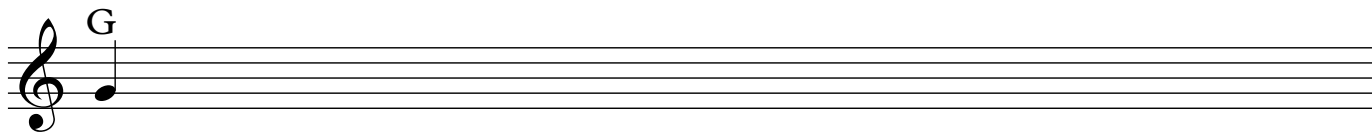
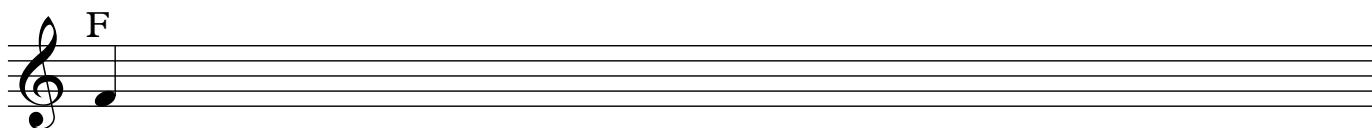
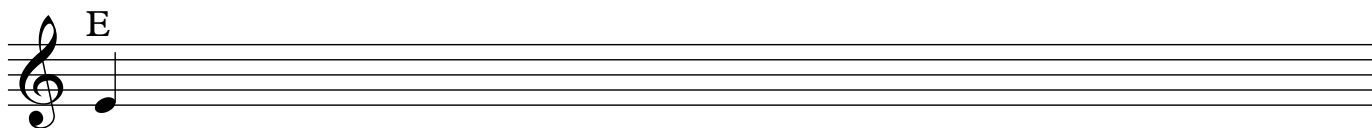
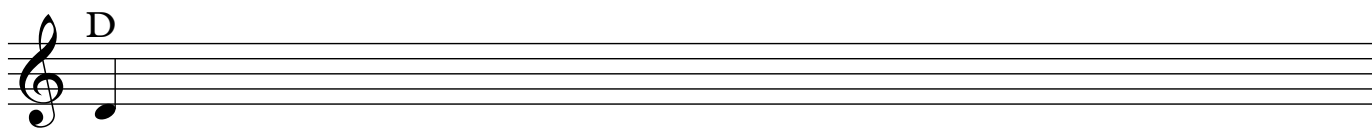
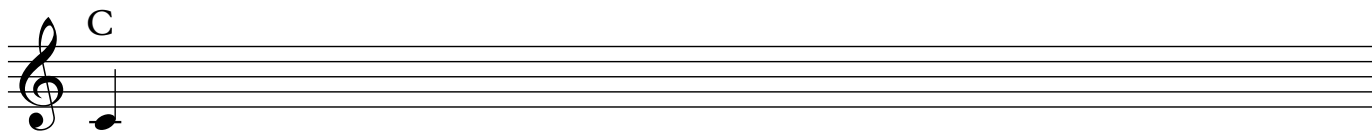


# Writing Music Workbook

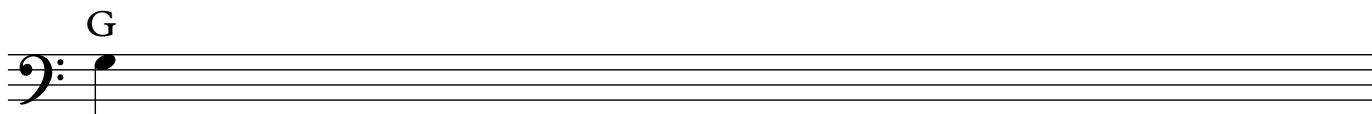
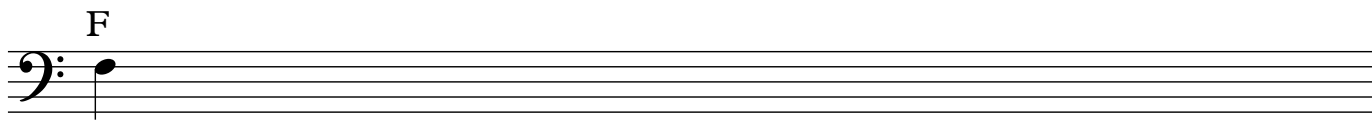
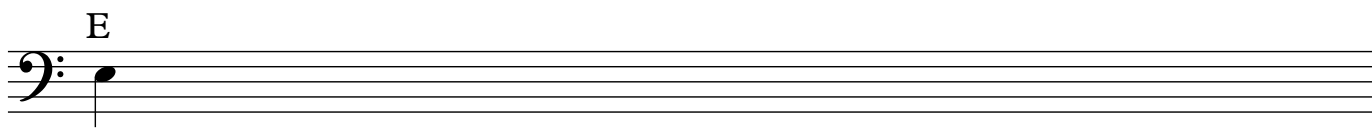
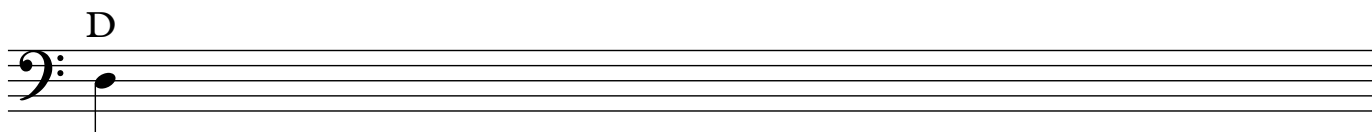
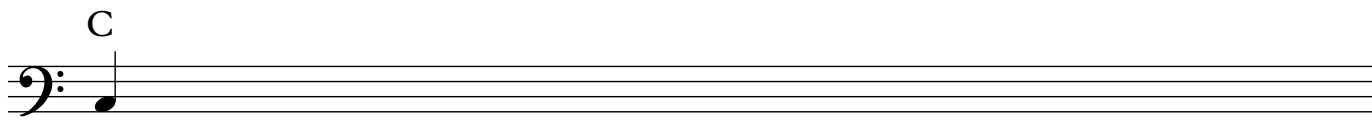
by C.A. Morrow

Write 10 more of the same note on each staff. The written notes should look identical to each example

*Examples*



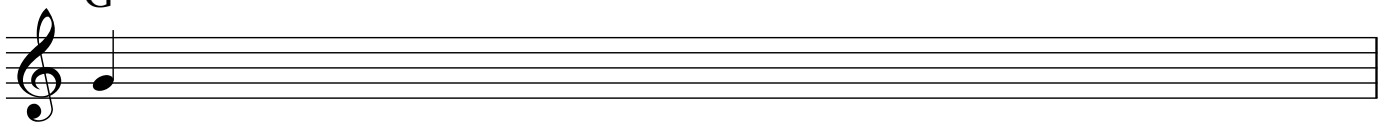
*Examples*



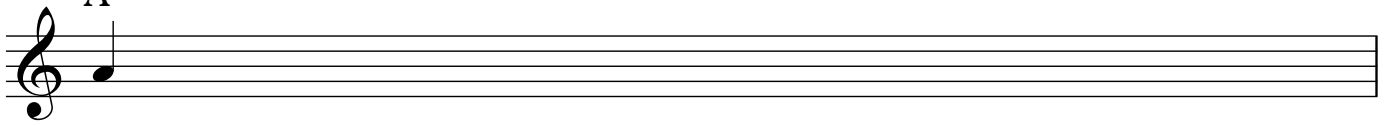
Write 10 more of the same note on each staff. The written notes should look identical to each example

*Examples*

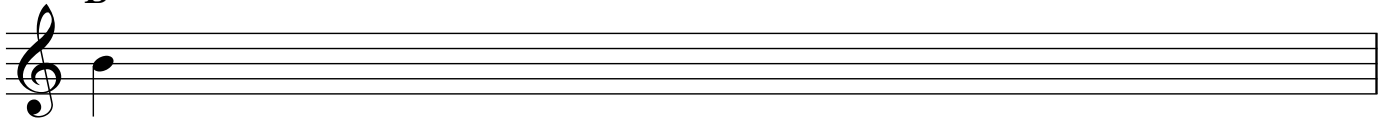
G



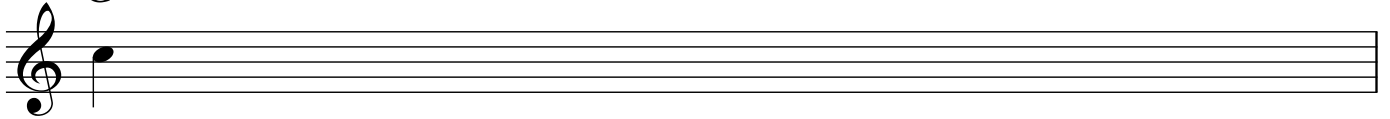
A



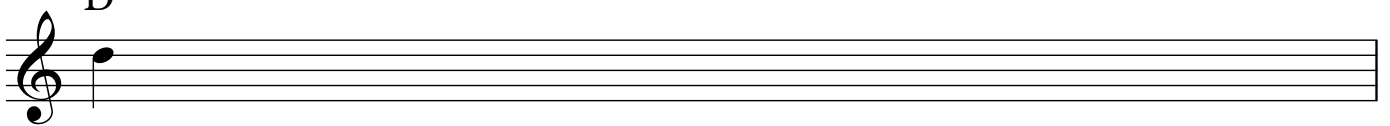
B



C

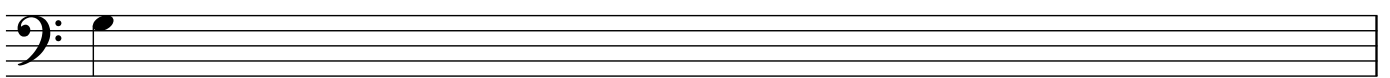


D

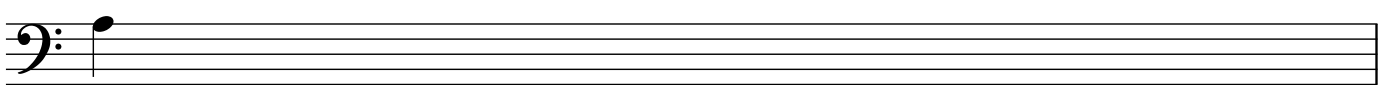


*Examples*

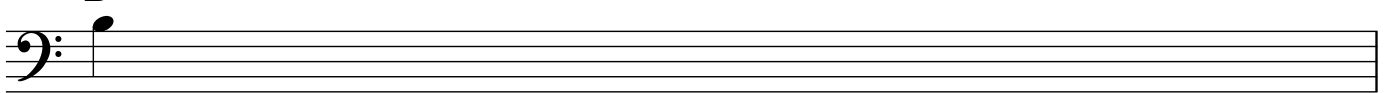
G



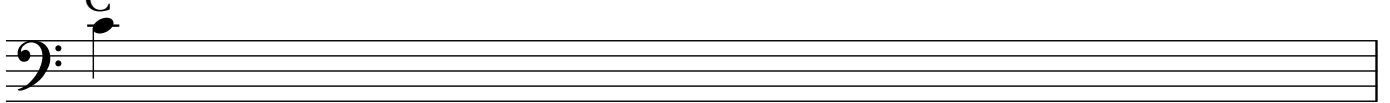
A



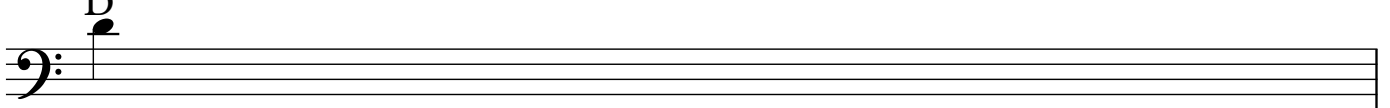
B



C

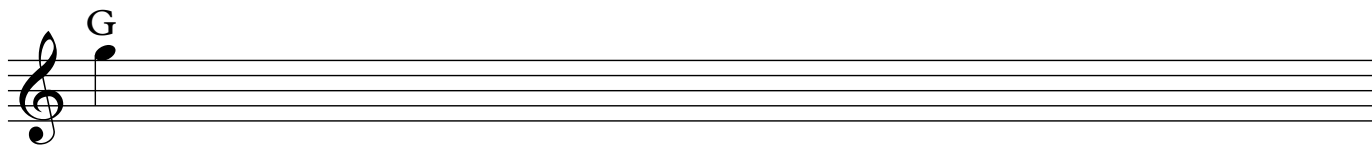
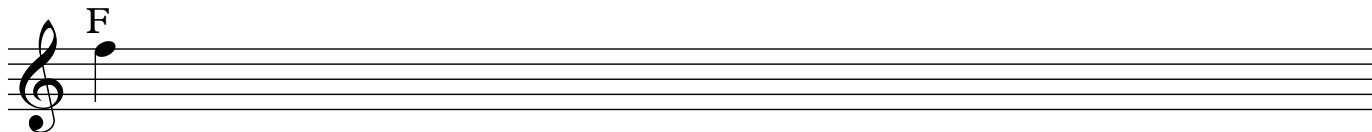
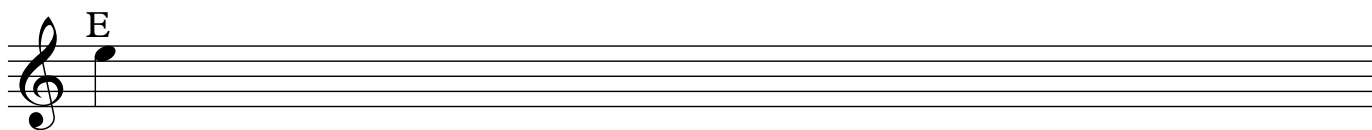
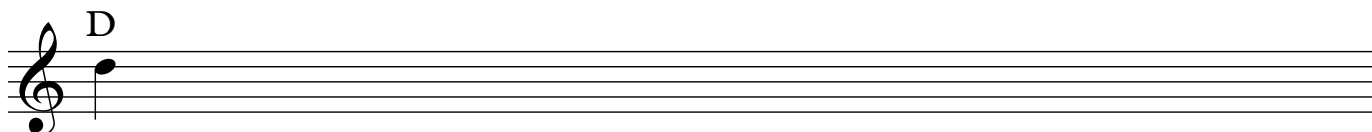
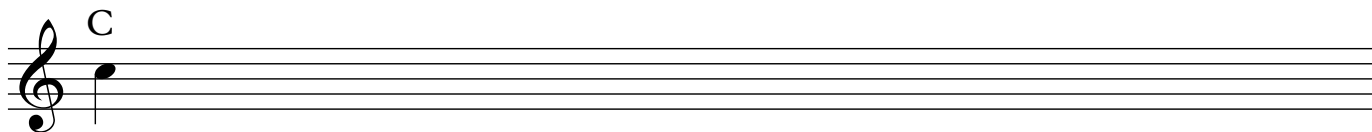


D

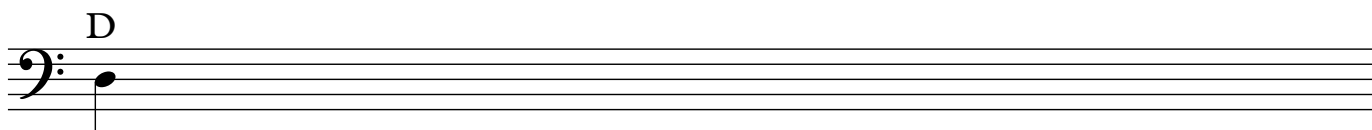
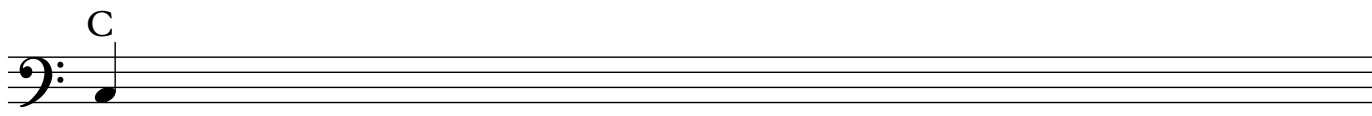
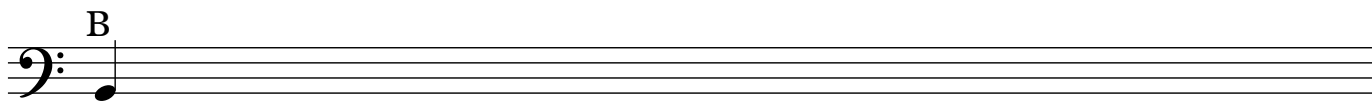
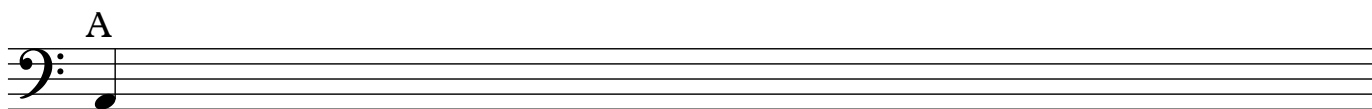
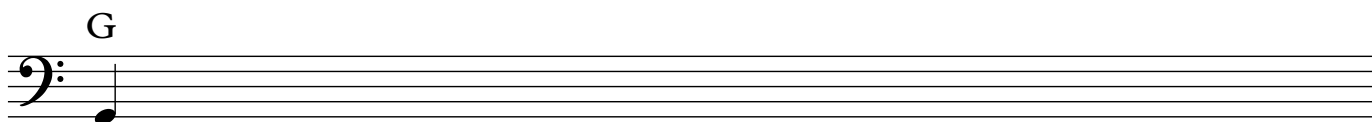


Write 10 more of the same note on each staff. The written notes should look identical to each example

*Examples*

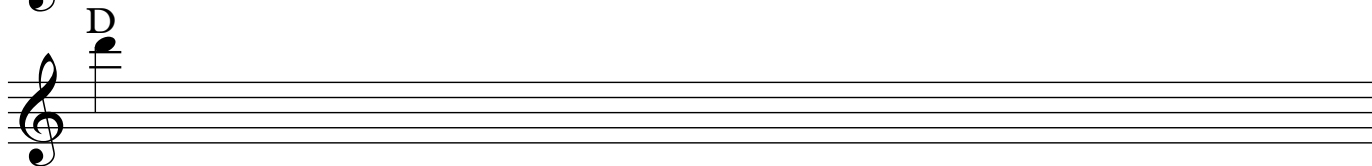
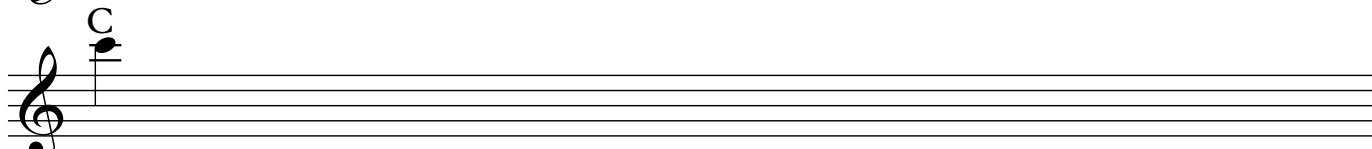
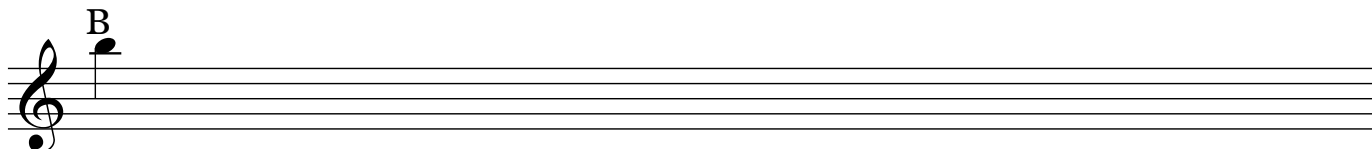
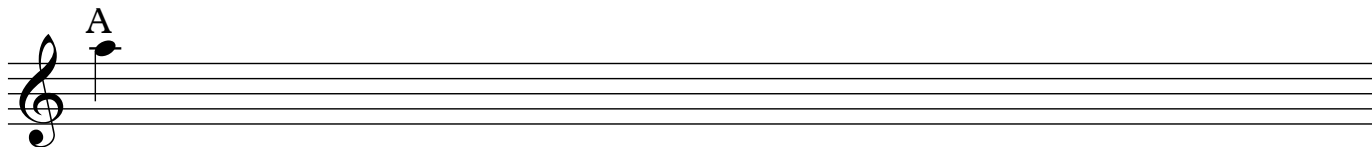
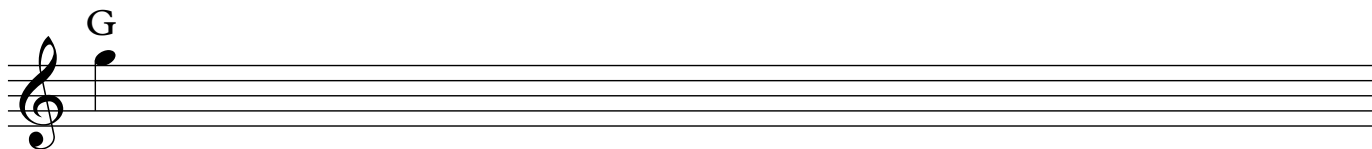


*Examples*

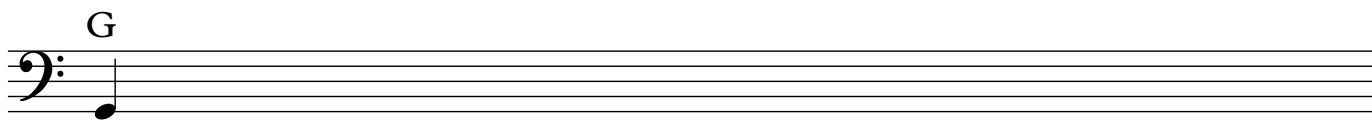
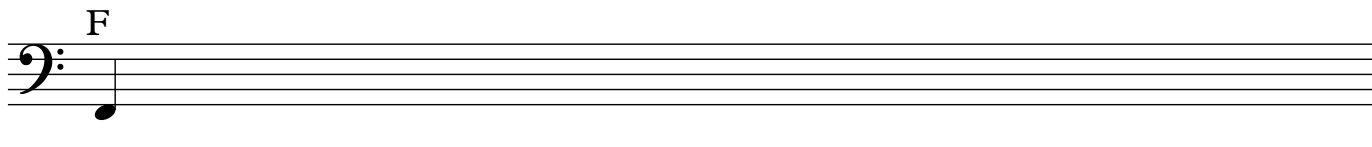
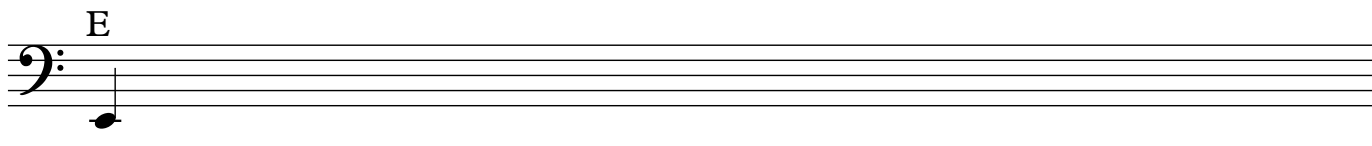
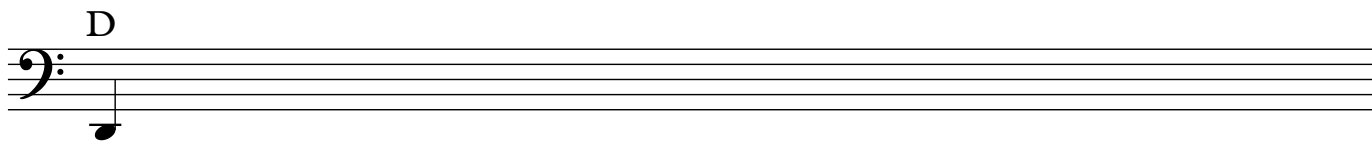
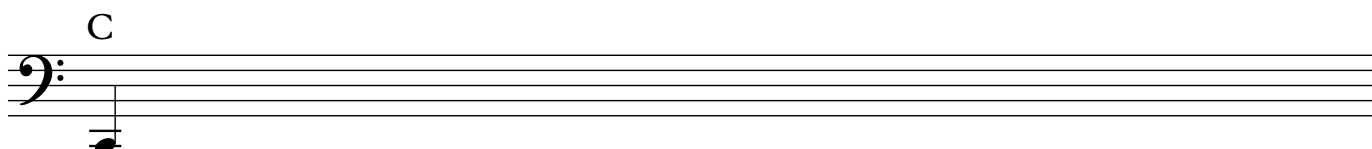


Write 10 more of the same note on each staff. The written notes should look identical to each example

*Examples*

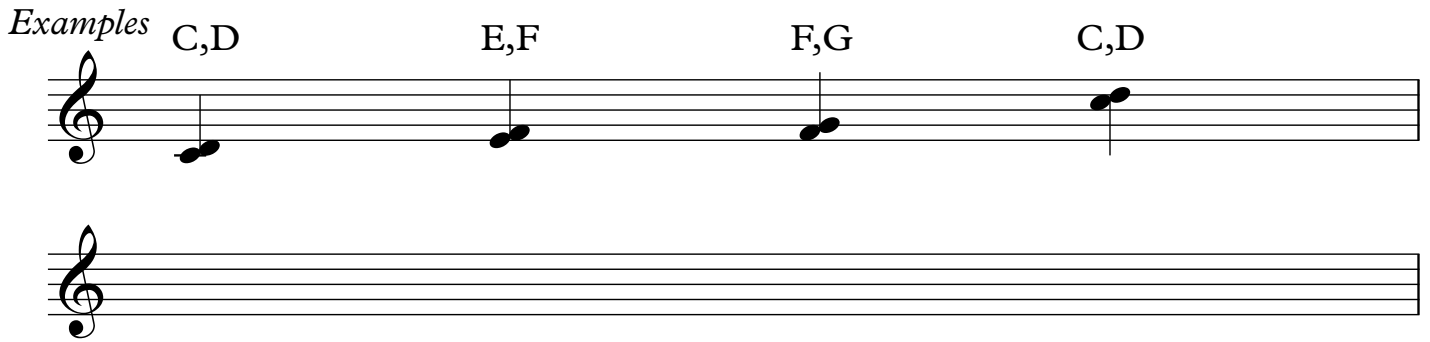


*Examples*

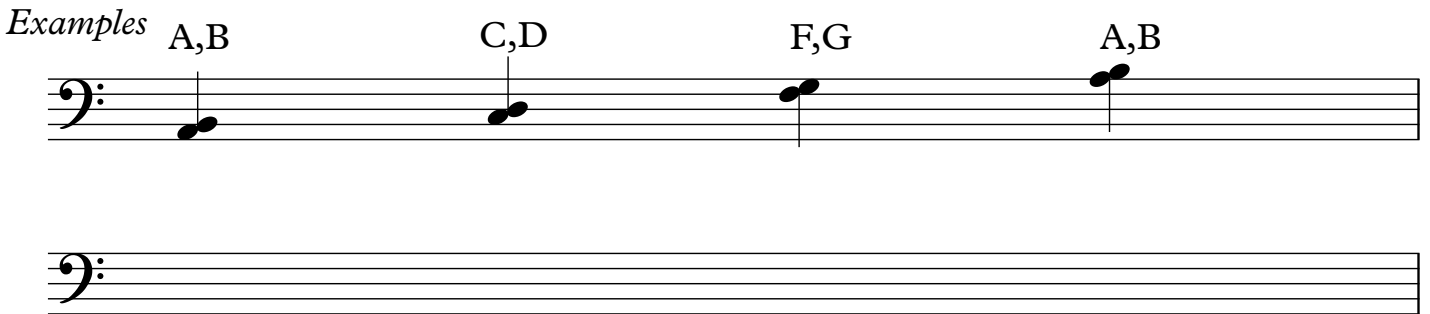


Write intervals of **2nds** on the blank staff below the examples.  
The written intervals should look identical to each example

*Examples* C,D                      E,F                      F,G                      C,D

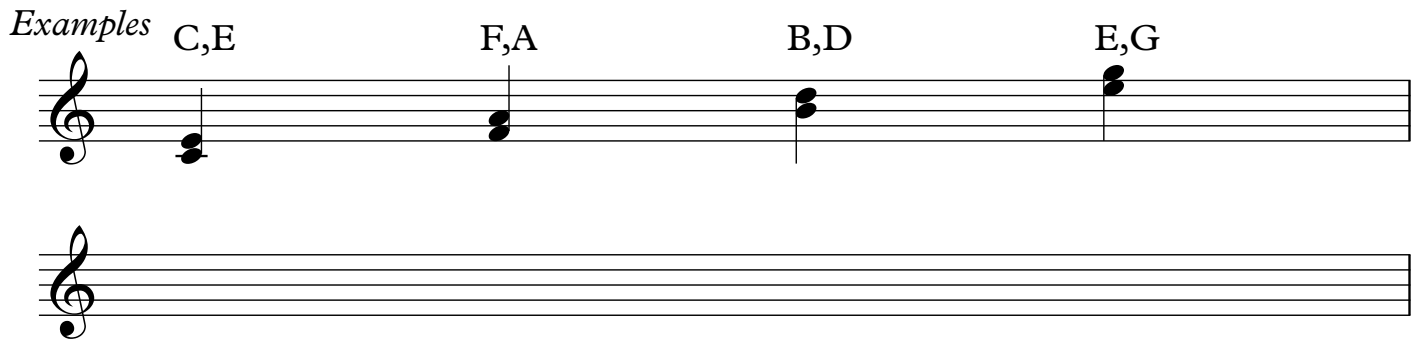


*Examples* A,B                      C,D                      F,G                      A,B

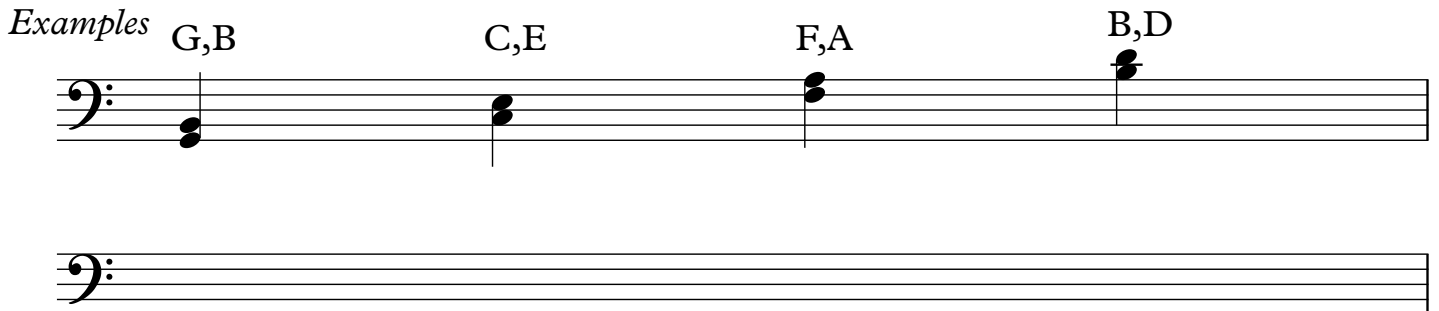


Write intervals of **3rds** on the blank staff below the examples.  
The written intervals should look identical to each example

*Examples* C,E                      F,A                      B,D                      E,G



*Examples* G,B                      C,E                      F,A                      B,D



Write intervals of **4ths** on the blank staff below the examples.  
The written intervals should look identical to each example

*Examples* C,F                      D,G                      G,C                      A,D

*Examples* G,C                      A,D                      C,F                      D,G

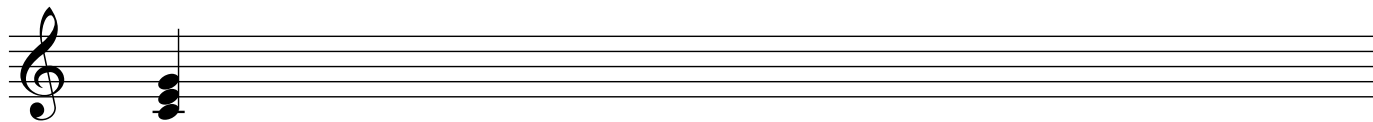
Write intervals of **5ths** on the blank staff below the examples.  
The written intervals should look identical to each example

*Examples* C,G                      F,C                      G,D                      C,G

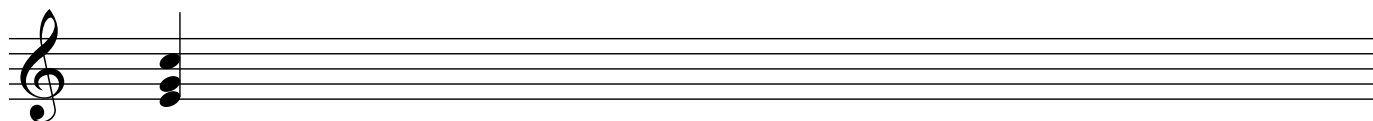
*Examples* G,D                      C,G                      F,C                      G,D

Write 5 of the **C Major Chord** and 5 of each inversion on the blank staff below the examples.  
The written chords should look identical to each example

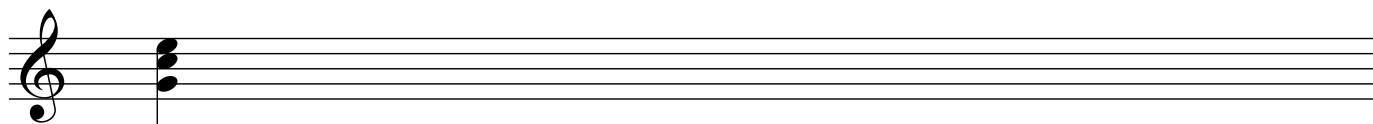
*Examples*



Root Position

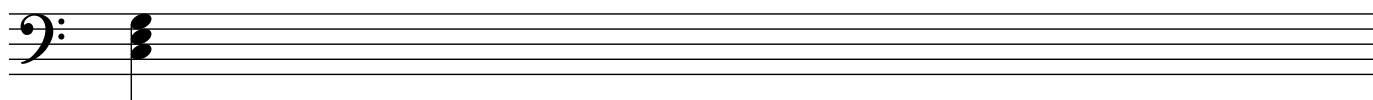


1st Inversion

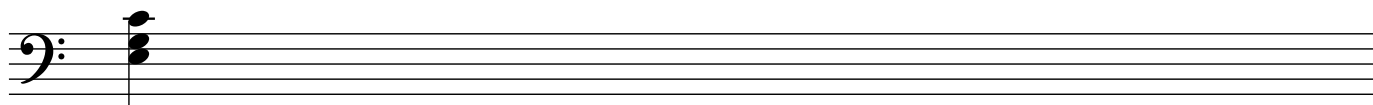


2nd Inversion

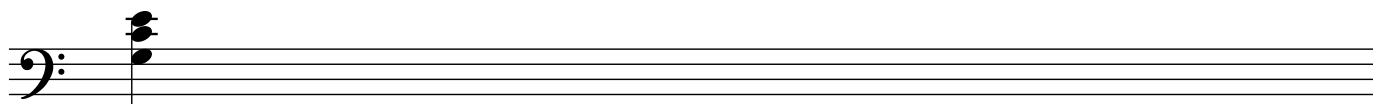
*Examples*



Root Position



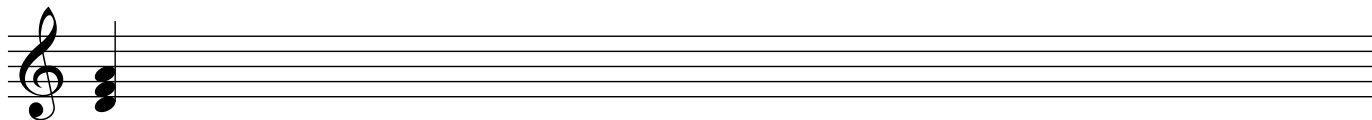
1st Inversion



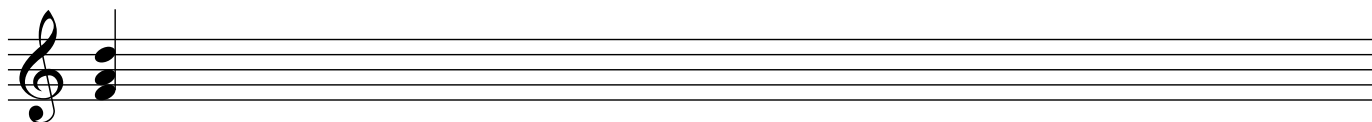
2nd Inversion

Write 5 of the **D minor Chord** and 5 of each inversion on the blank staff below the examples.  
The written chords should look identical to each example

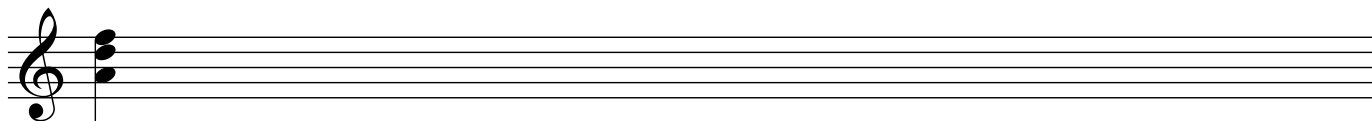
*Examples*



Root Position

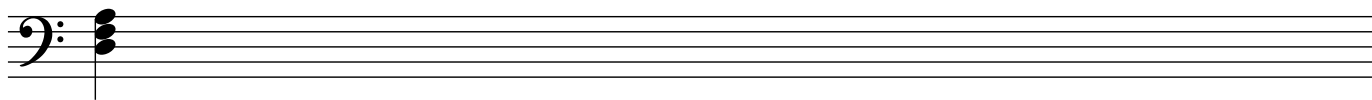


1st Inversion

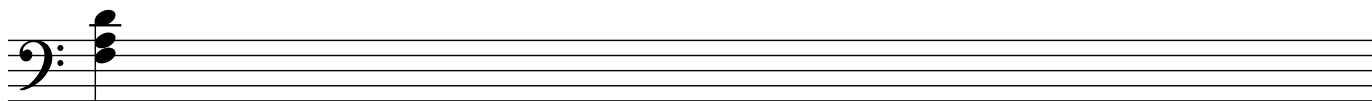


2nd Inversion

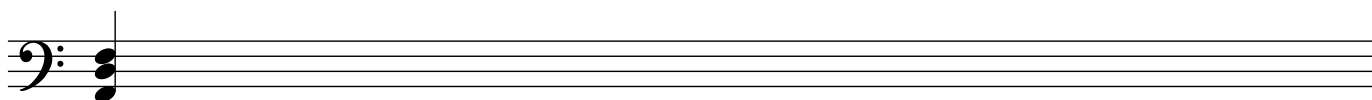
*Examples*



Root Position



1st Inversion

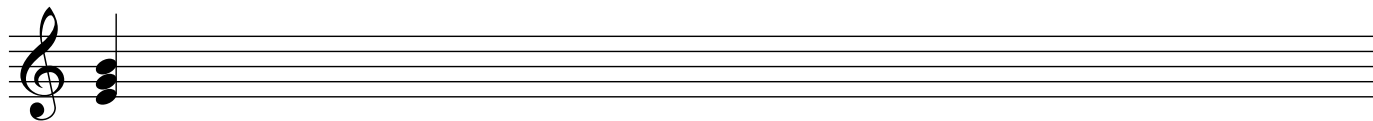


2nd Inversion

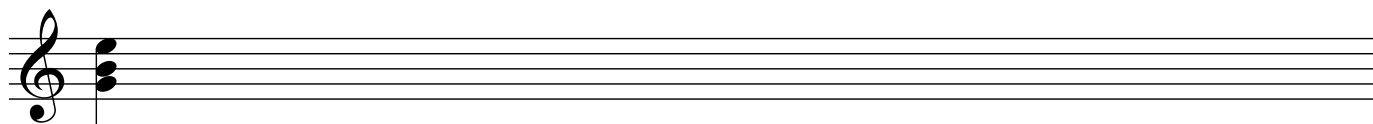


Write 5 of the **E minor Chord** and 5 of each inversion on the blank staff below the examples.  
The written chords should look identical to each example

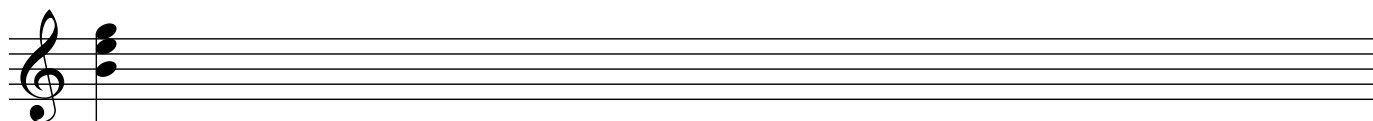
*Examples*



Root Position

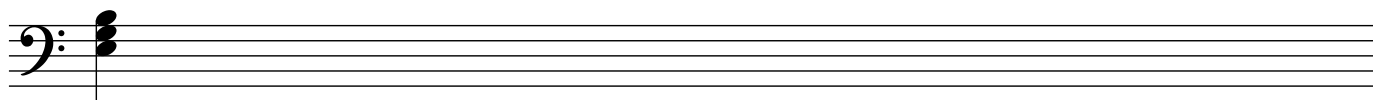


1st Inversion

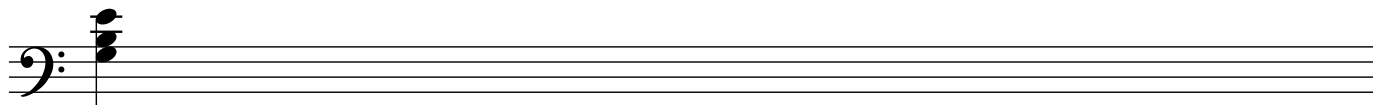


2nd Inversion

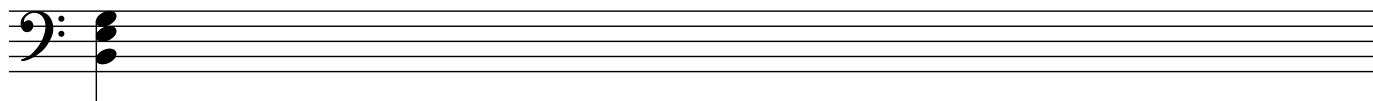
*Examples*



Root Position



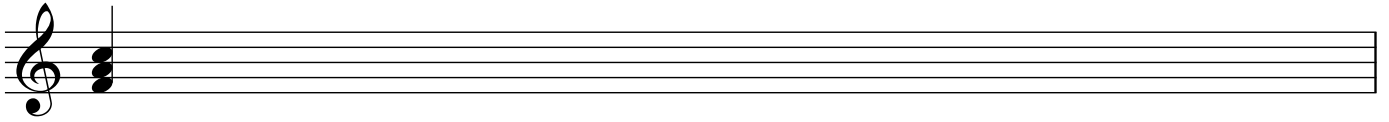
1st Inversion



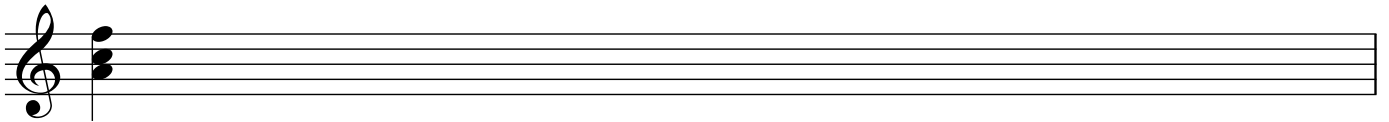
2nd Inversion

Write 5 of the **F Major Chord** and 5 of each inversion on the blank staff below the examples.  
The written chords should look identical to each example

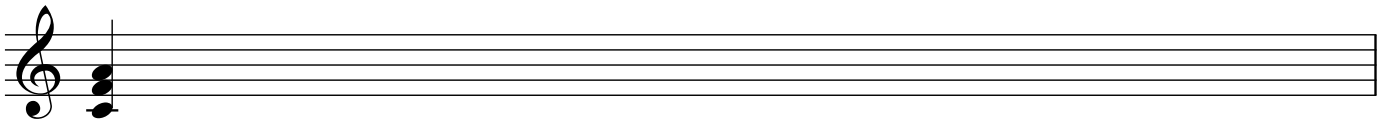
*Examples*



Root Position

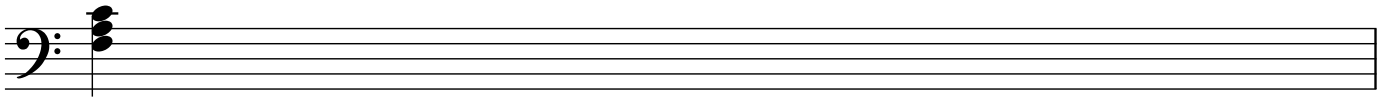


1st Inversion

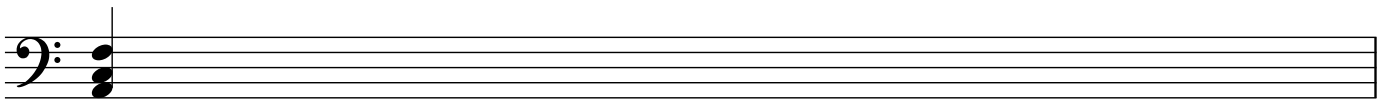


2nd Inversion

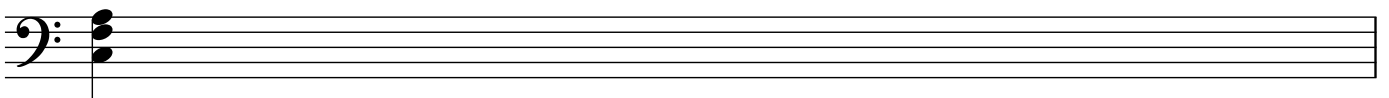
*Examples*



Root Position



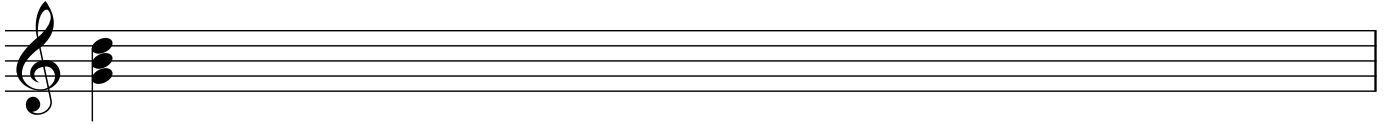
1st Inversion



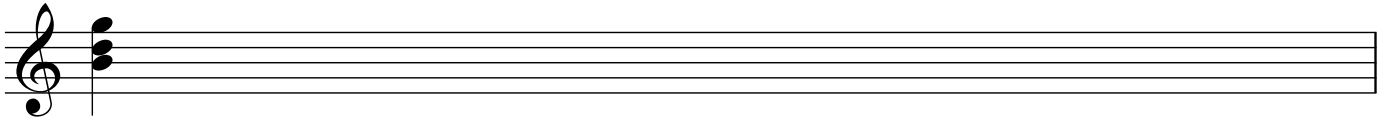
2nd Inversion

Write 5 of the **G Major Chord** and 5 of each inversion on the blank staff below the examples.  
The written chords should look identical to each example

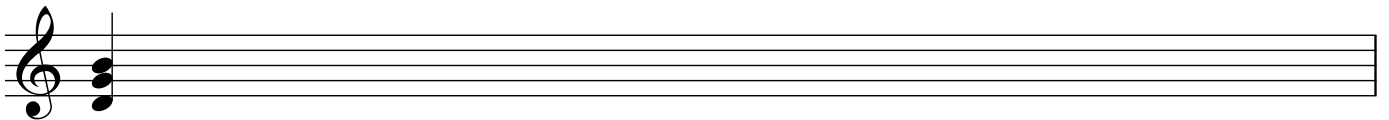
*Examples*



Root Position

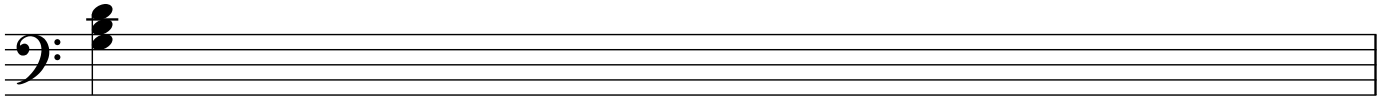


1st Inversion

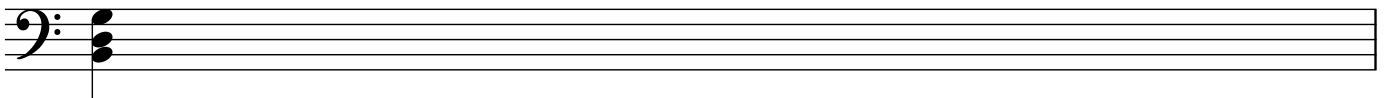


2nd Inversion

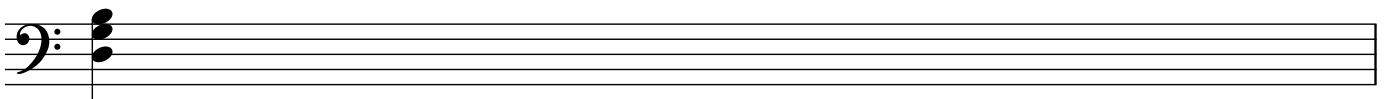
*Examples*



Root Position



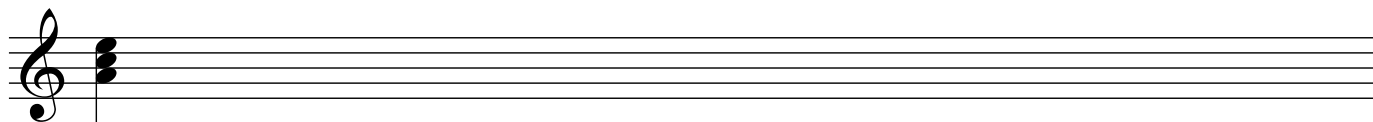
1st Inversion



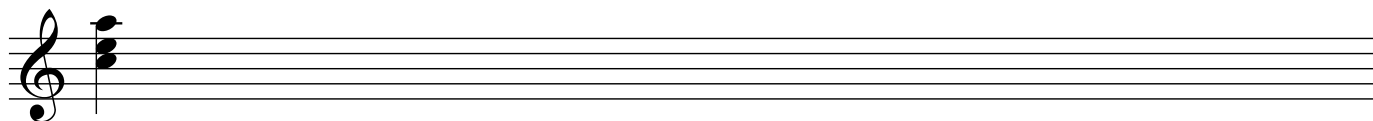
2nd Inversion

Write 5 of the **A minor Chord** and 5 of each inversion on the blank staff below the examples.  
The written chords should look identical to each example

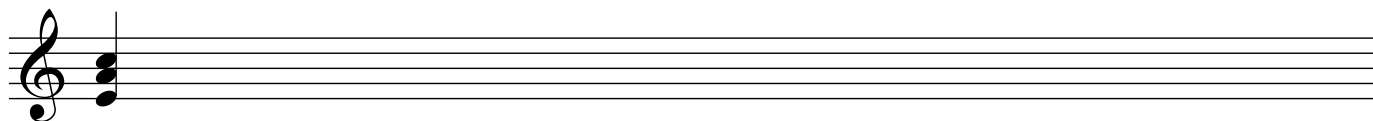
*Examples*



Root Position

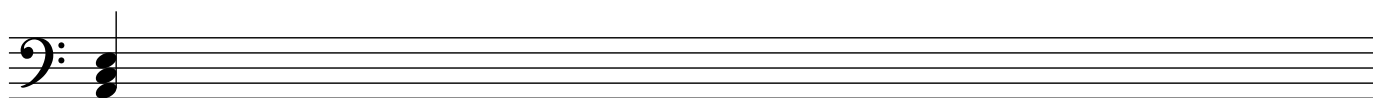


1st Inversion

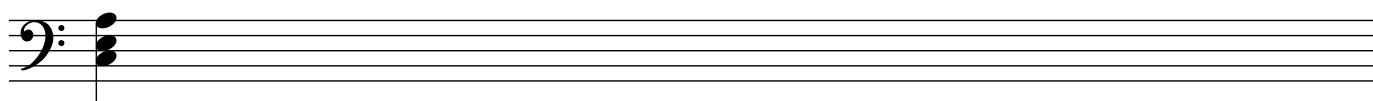


2nd Inversion

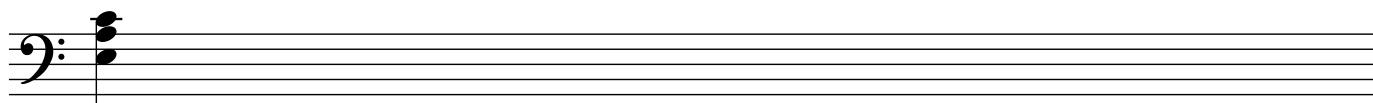
*Examples*



Root Position



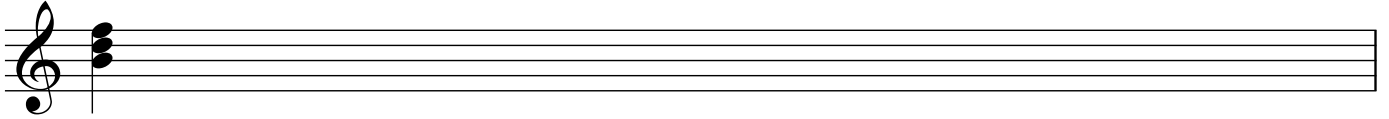
1st Inversion



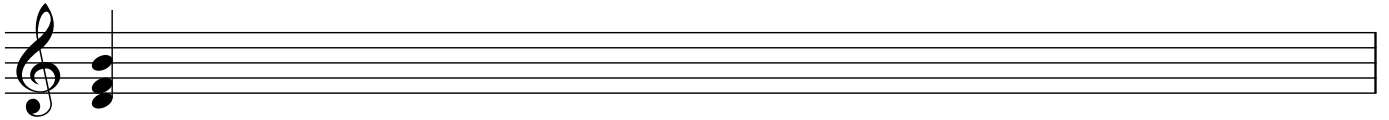
2nd Inversion

Write 5 of the **B Diminished Chord** and 5 of each inversion on the blank staff below the examples.  
The written chords should look identical to each example

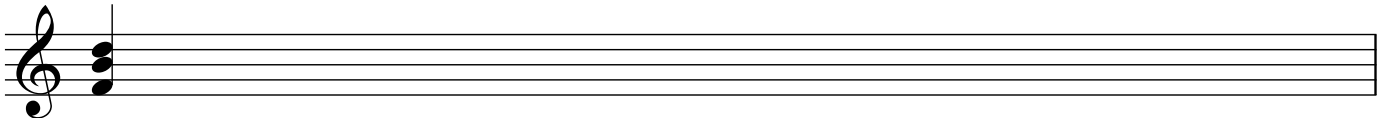
*Examples*



Root Position

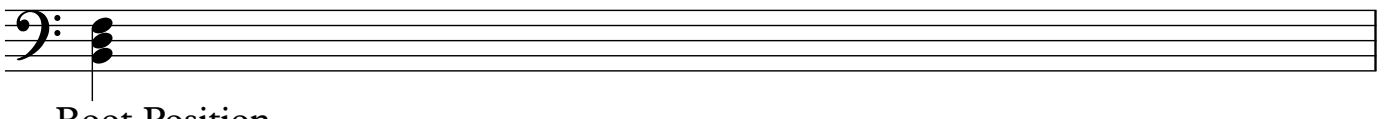


1st Inversion

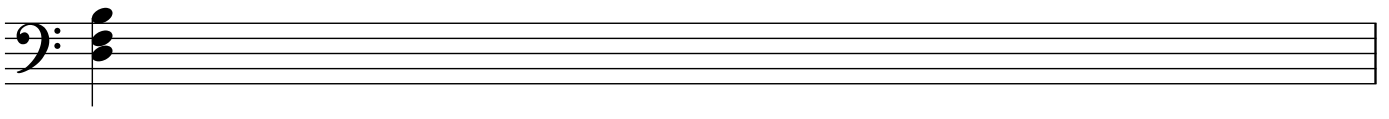


2nd Inversion

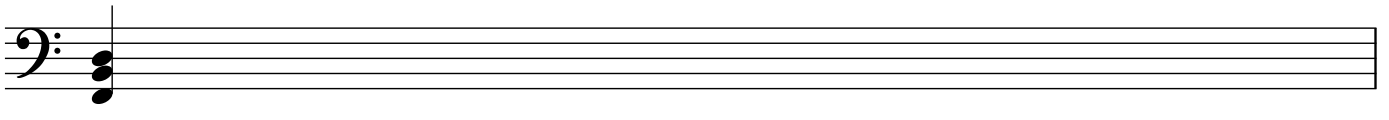
*Examples*



Root Position

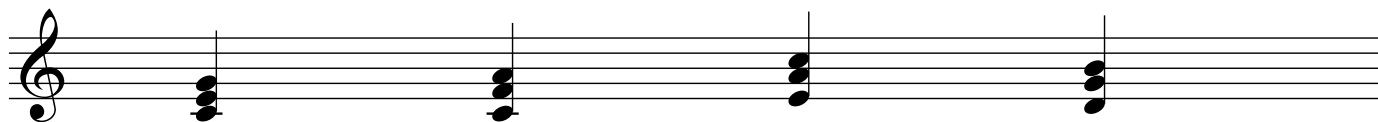


1st Inversion

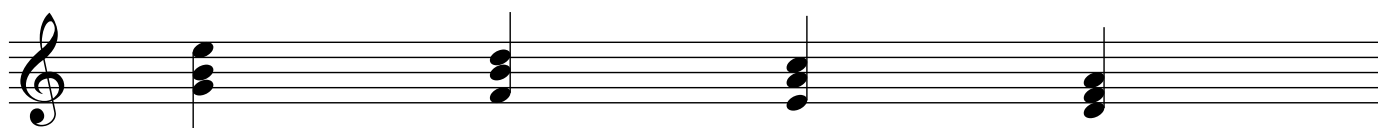


2nd Inversion

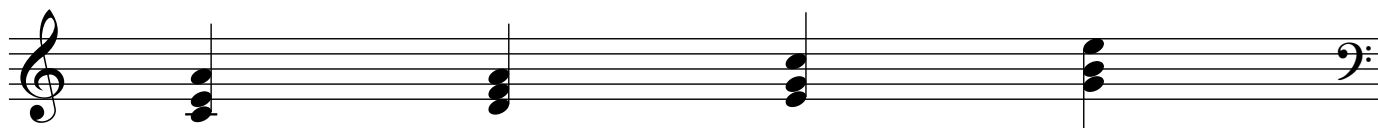
Identify and write the chord names above each chord, then write what inversion is used below the chord



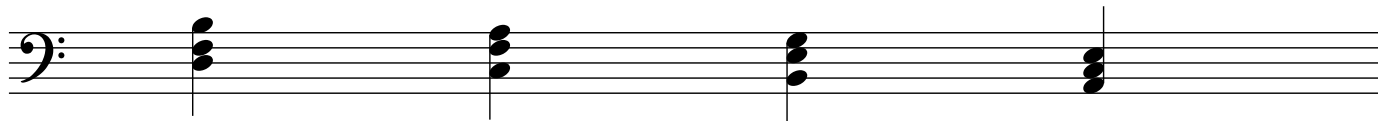
\_\_\_\_\_



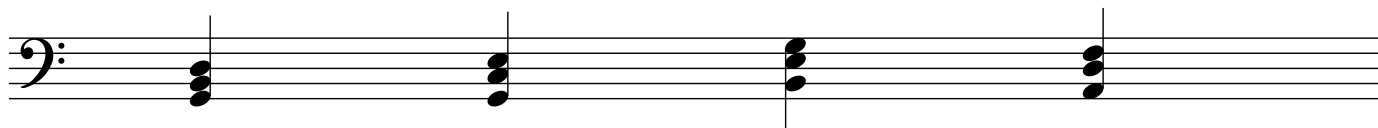
\_\_\_\_\_



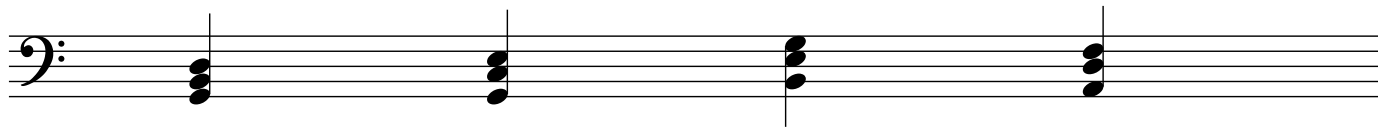
\_\_\_\_\_



\_\_\_\_\_



\_\_\_\_\_



\_\_\_\_\_

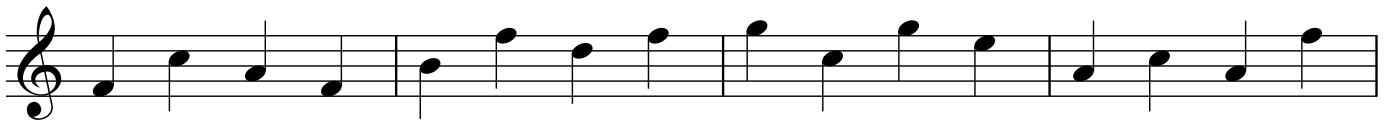
Identify these **Broken Chords** by adding all the notes together.  
Write the chord names above each chord, then write what inversion is used below the chord



\_\_\_\_\_



\_\_\_\_\_



\_\_\_\_\_



\_\_\_\_\_



\_\_\_\_\_



\_\_\_\_\_



\_\_\_\_\_



\_\_\_\_\_

Write intervals of **6ths** on the blank staff below the examples.  
The written intervals should look identical to each example

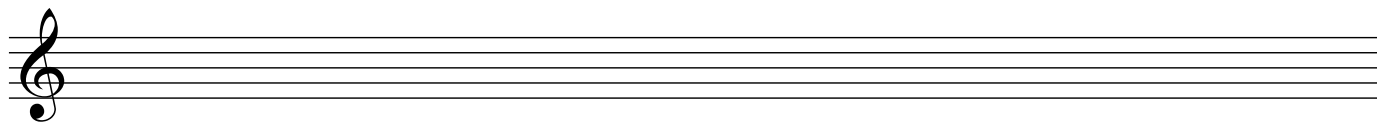
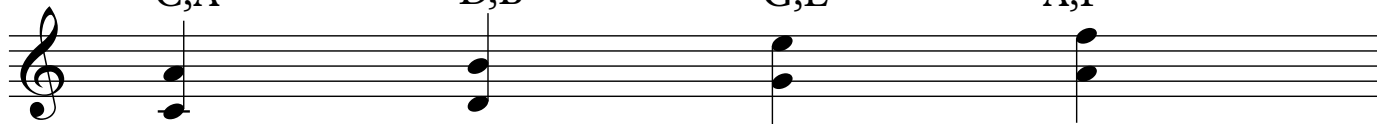
Examples

C,A

D,B

G,E

A,F



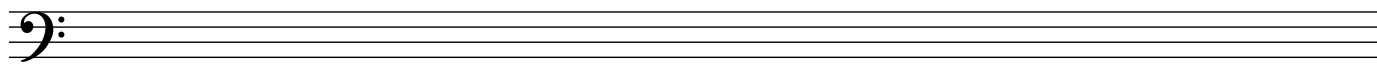
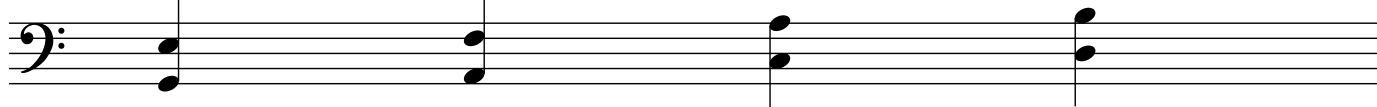
Examples

G,E

A,F

C,A

D,B



Write intervals of **7ths** on the blank staff below the examples.  
The written intervals should look identical to each example

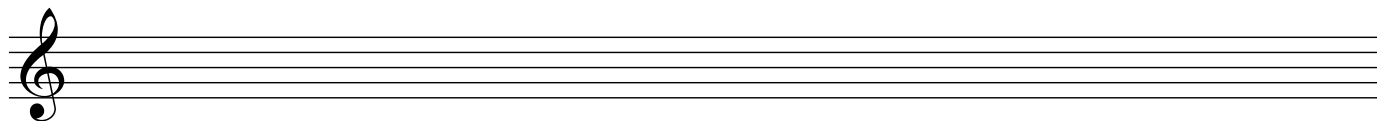
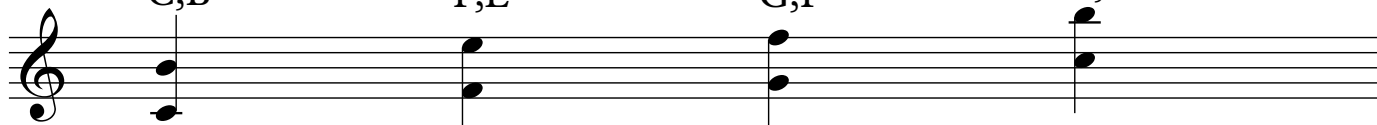
Examples

C,B

F,E

G,F

C,B



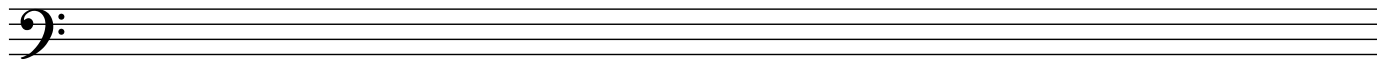
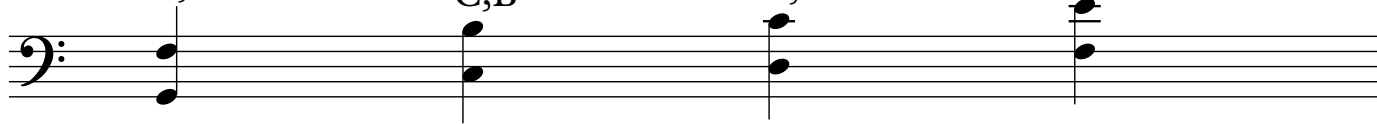
Examples

G,F

C,B

D,C

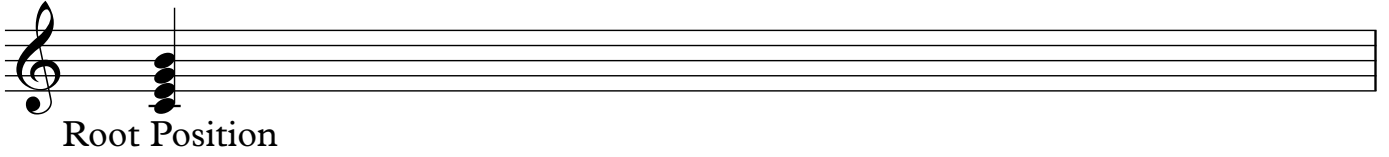
F,E





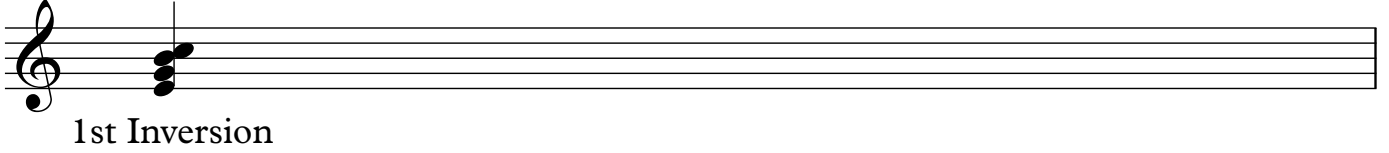
Write 5 of the **C Major Seventh (7th) Chord** and 5 of each inversion on the blank staff below the examples.  
The written chords should look identical to each example

Examples Cmaj7



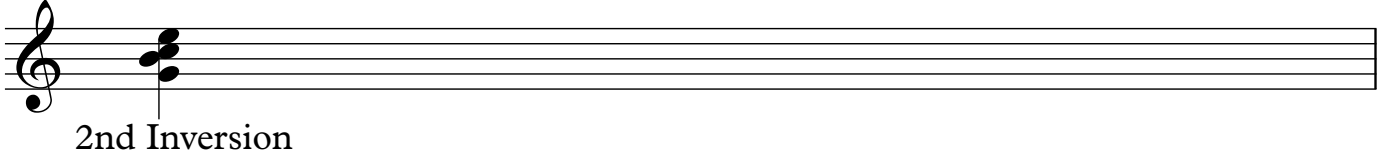
Root Position

Cmaj7/E



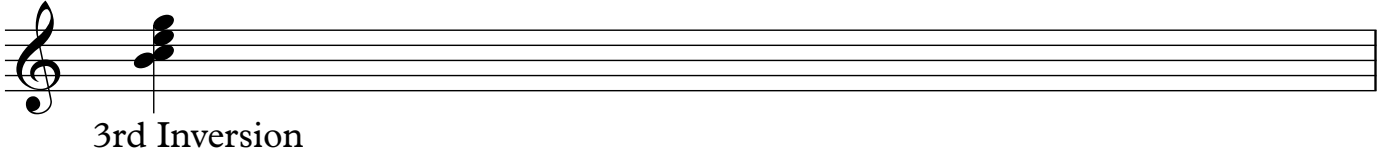
1st Inversion

Cmaj7/G



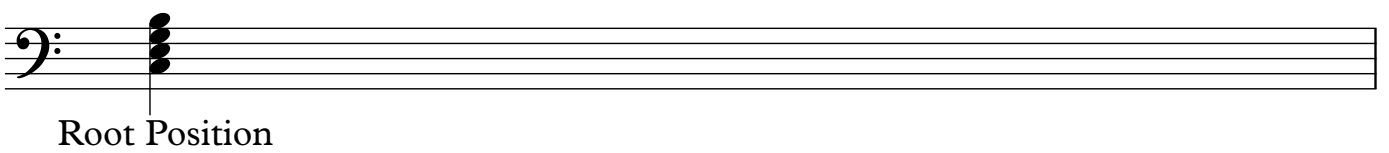
2nd Inversion

C/B



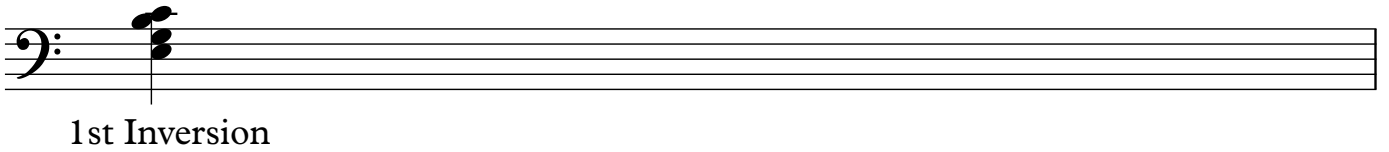
3rd Inversion

Examples Cmaj7



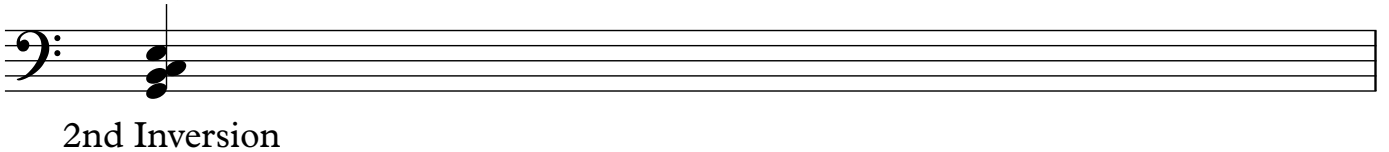
Root Position

Cmaj7/E



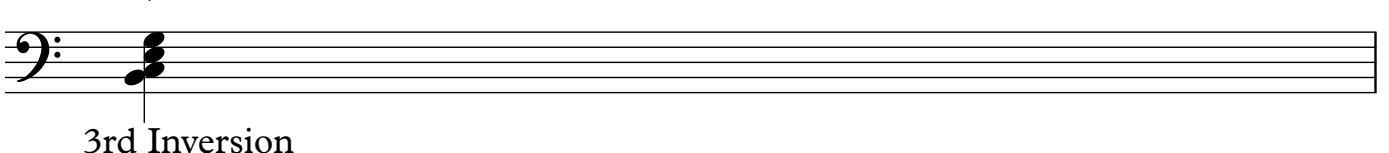
1st Inversion

Cmaj7/G



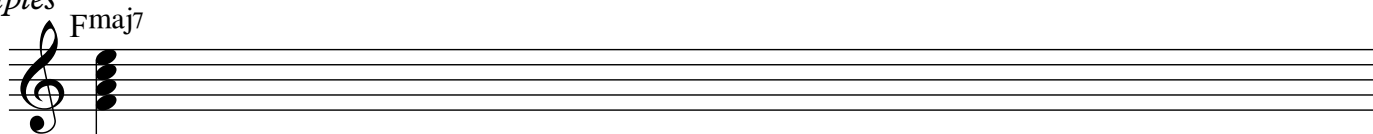
2nd Inversion

C/B

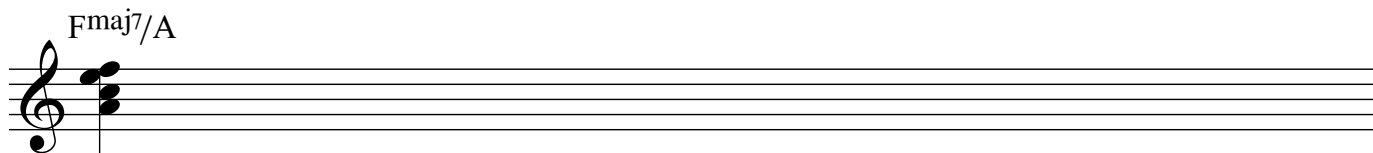


3rd Inversion

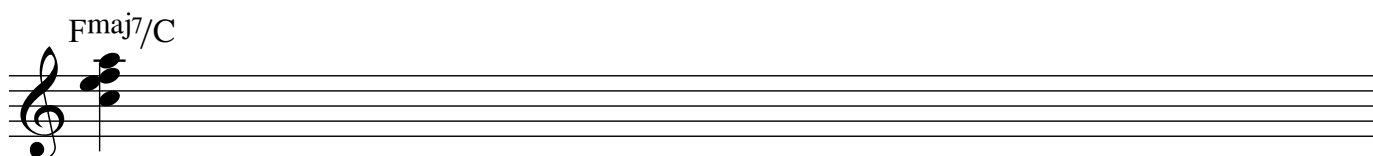
Write 5 of the **F Major Seventh (7th) Chord** and 5 of each inversion on the blank staff below the examples.  
The written chords should look identical to each example

*Examples*

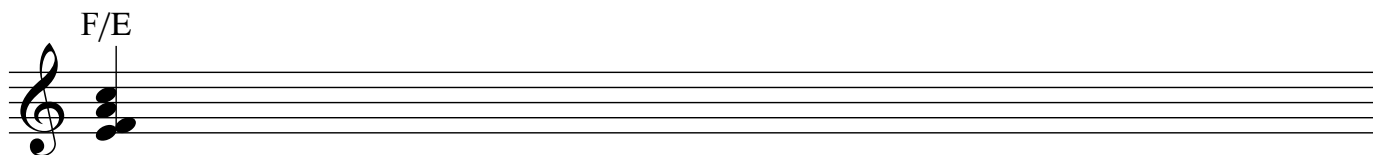
Root Position



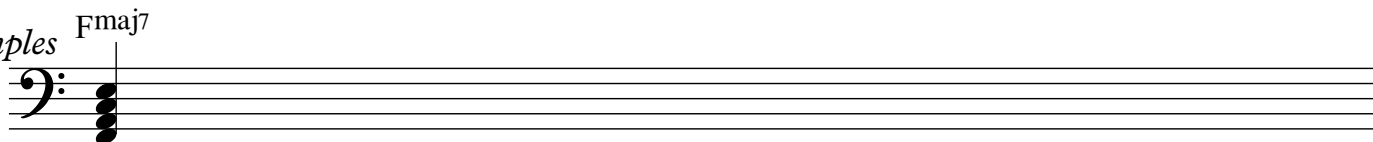
1st Inversion



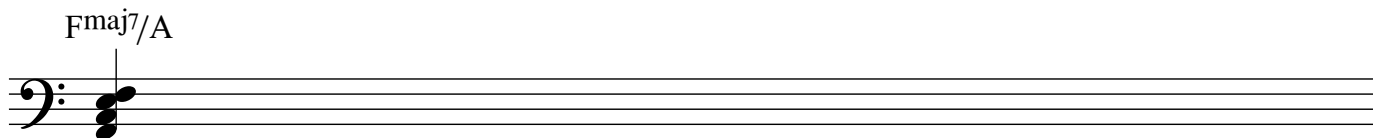
2nd Inversion



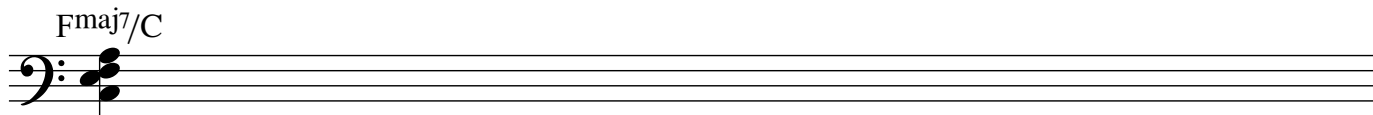
3rd Inversion

*Examples*

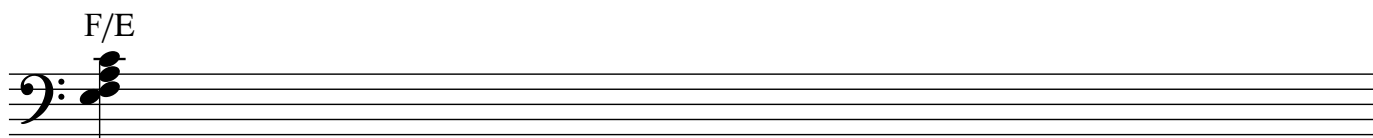
Root Position



1st Inversion



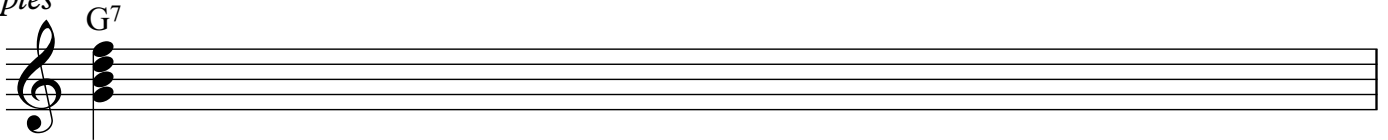
2nd Inversion



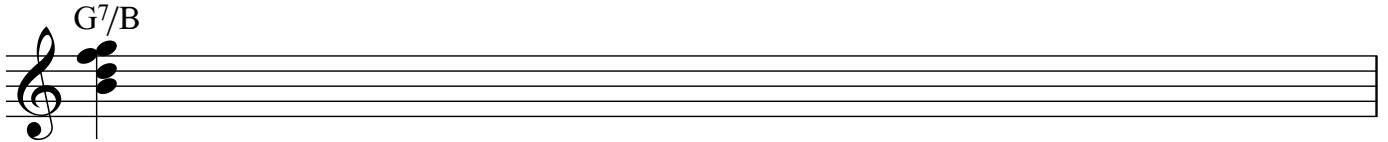
3rd Inversion

Write 5 of the **G Dominant Seventh (G7) Chord** and 5 of each inversion on the blank staff below the examples.  
The written chords should look identical to each example

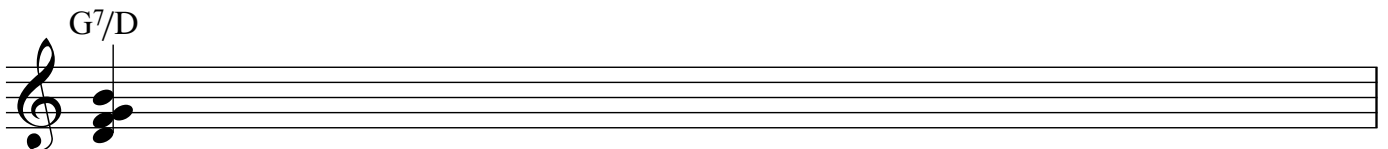
*Examples*



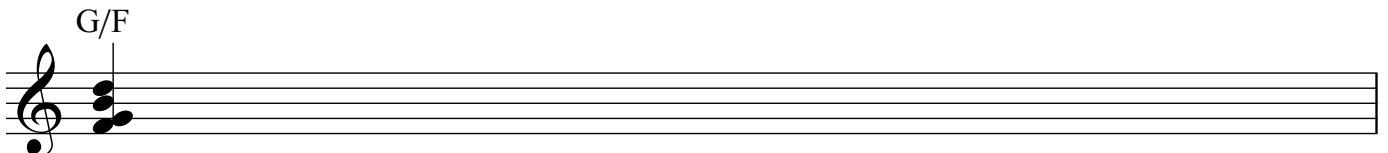
Root Position



1st Inversion

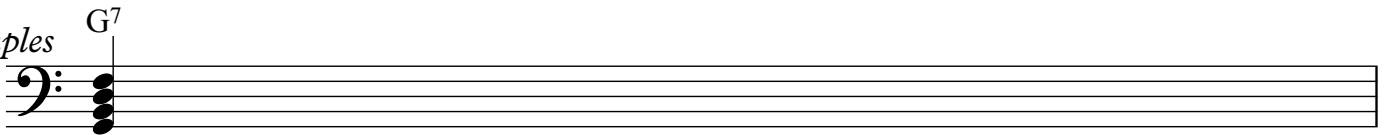


2nd Inversion

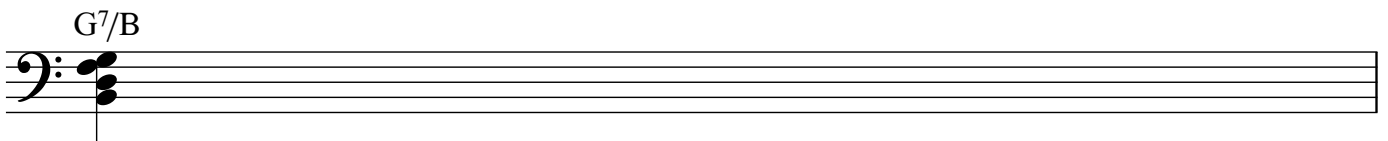


3rd Inversion

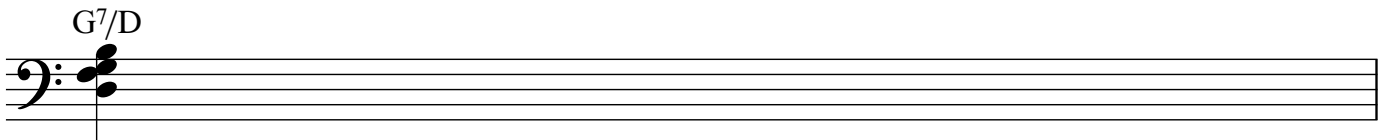
*Examples*



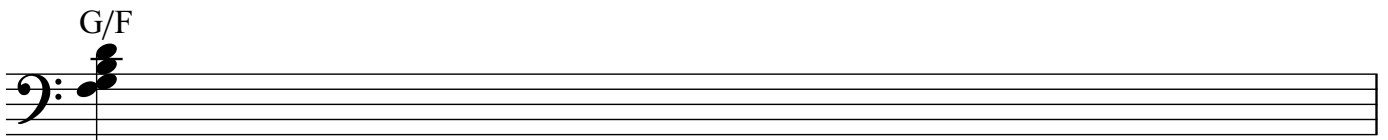
Root Position



1st Inversion



2nd Inversion



3rd Inversion

Identify these **Broken Seventh Chords** by adding all the notes together.  
Write the chord names above each chord, then write what inversion is used below the chord



\_\_\_\_\_



\_\_\_\_\_



\_\_\_\_\_



\_\_\_\_\_



\_\_\_\_\_



\_\_\_\_\_



\_\_\_\_\_



\_\_\_\_\_